

Tom Dixon.

INDUSTRIAL LANDSCAPE

Designer Collection by

ege[®]

THE URGE TO EXPLORE SPACE

Contents

5	Intro
6	Smoke
12	Coal
16	Iron
22	Wash
26	Blur
30	Tide
34	Brick
43	Collection overview
44	Colour palettes
45	Recolour options
49	All the details





The designer

Tom Dixon (OBE). Born in 1959. Self-taught British Designer. Founder of the design brand “Tom Dixon” and Design Research Studio that specialises in high-end concept interiors, large scale installations and architectural design. Museums across the globe have awarded and acquired some of his work, including MoMA, NYC and Centre Georges Pompidou, Paris. With a commitment to innovation and a mission to revive the British furniture industry, he is inspired by the nation’s unique heritage to create extraordinary products for everyday use.

The Industrial Landscape collection

London is the departure point for the collection – and for Tom Dixon a whole world of inspiration. Perhaps not the prettiest, nor the most glamorous, but certainly one of the most characterful cities in the world.

Gritty backdrops of railways, tunnels, of factories, workshops and warehouses. Materials so prevalent that they make a huge impact. Imperfect surfaces and materials make up the crumbling industrial landscape while the massive tidal River Thames splits the city in two, and new reflective glass towers begin to dominate the skyline.

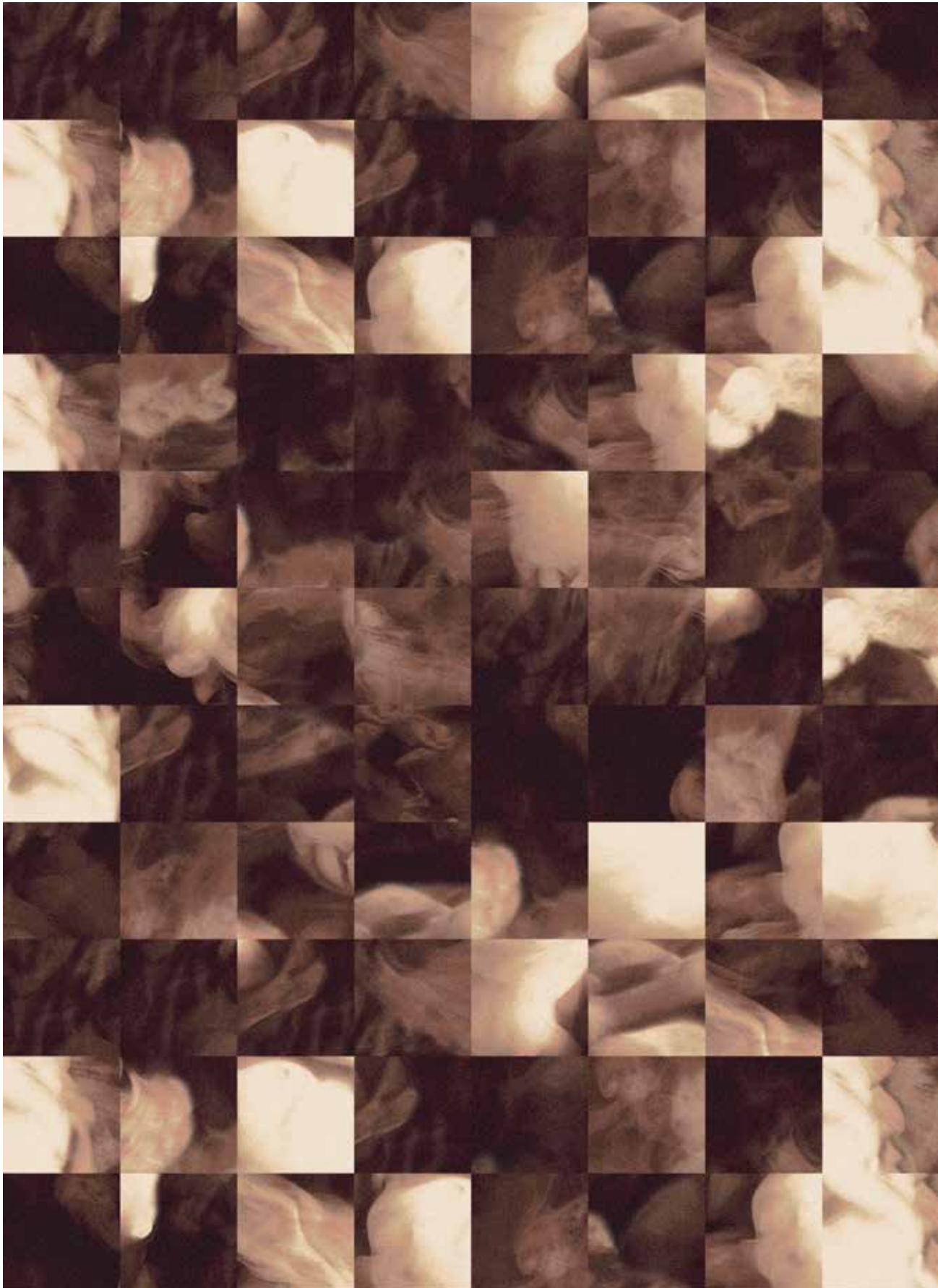
There is a kind of beautiful pattern of time on a grimy city that has lived a few lives. As materials break, they are repaired creating a new pattern that has its own aesthetic; deconstructed bricks, patinated metal and the grey muddy water of the Thames. A series of patterns and textures that come straight from the building or the erosion process.

The Industrial Landscape collection reinterprets the rough, raw everyday surfaces of the city that are so familiar to Tom Dixon. Each of the seven designs is available as tiles and broadloom and can be recoloured to meet your requirements.

smoke

The coal-powered city with its rich industrial history, production and manufacture.

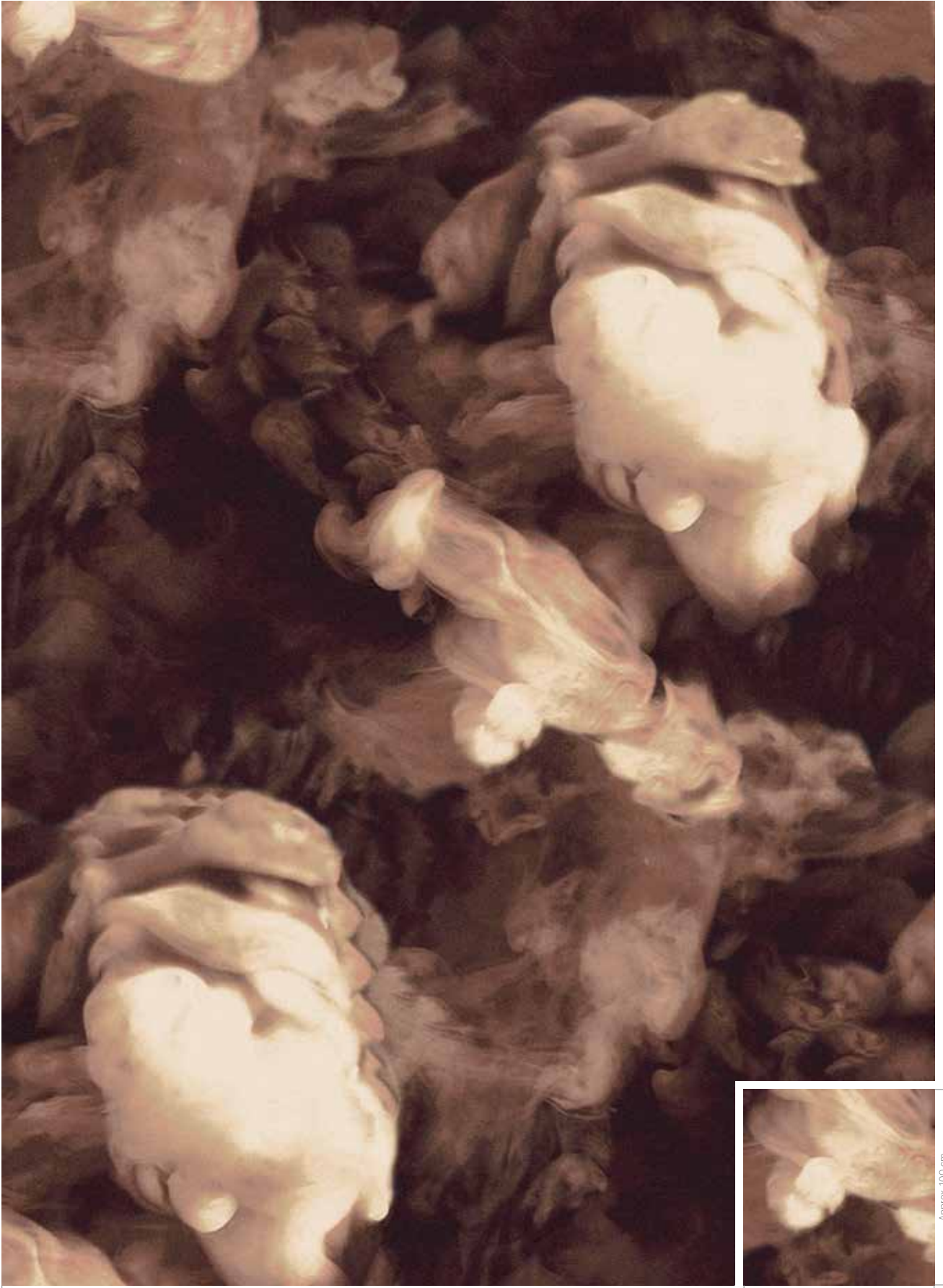




384 cm



No recolour possible



400 cm

Approx. 100 cm



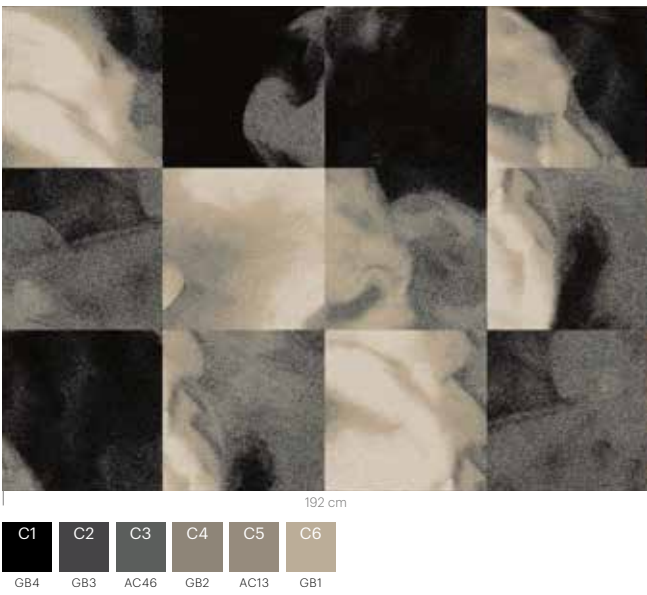
Approx. 100 cm



No recolour possible

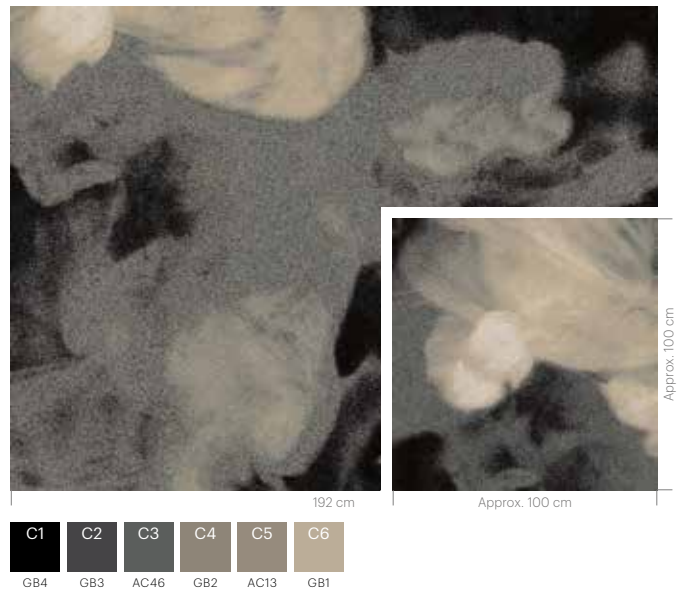
RFM52952270 SMOKE
Installation example 4 x 3 tiles

K5295



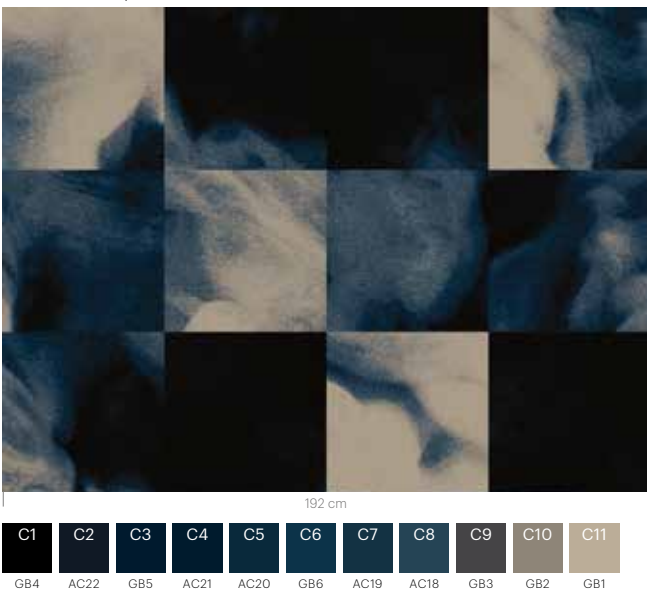
RF52952270 SMOKE
w: 390.1 cm x l: 585.1 cm

K5295



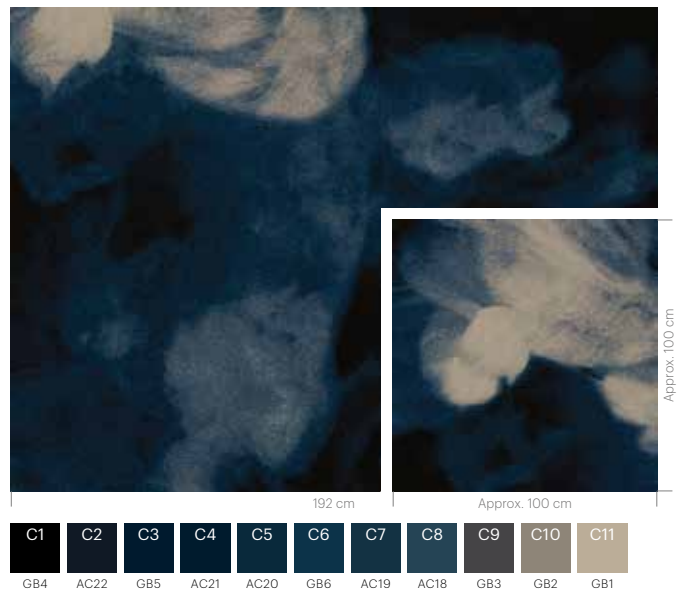
RFM52952271 SMOKE
Installation example 4 x 3 tiles

K5295

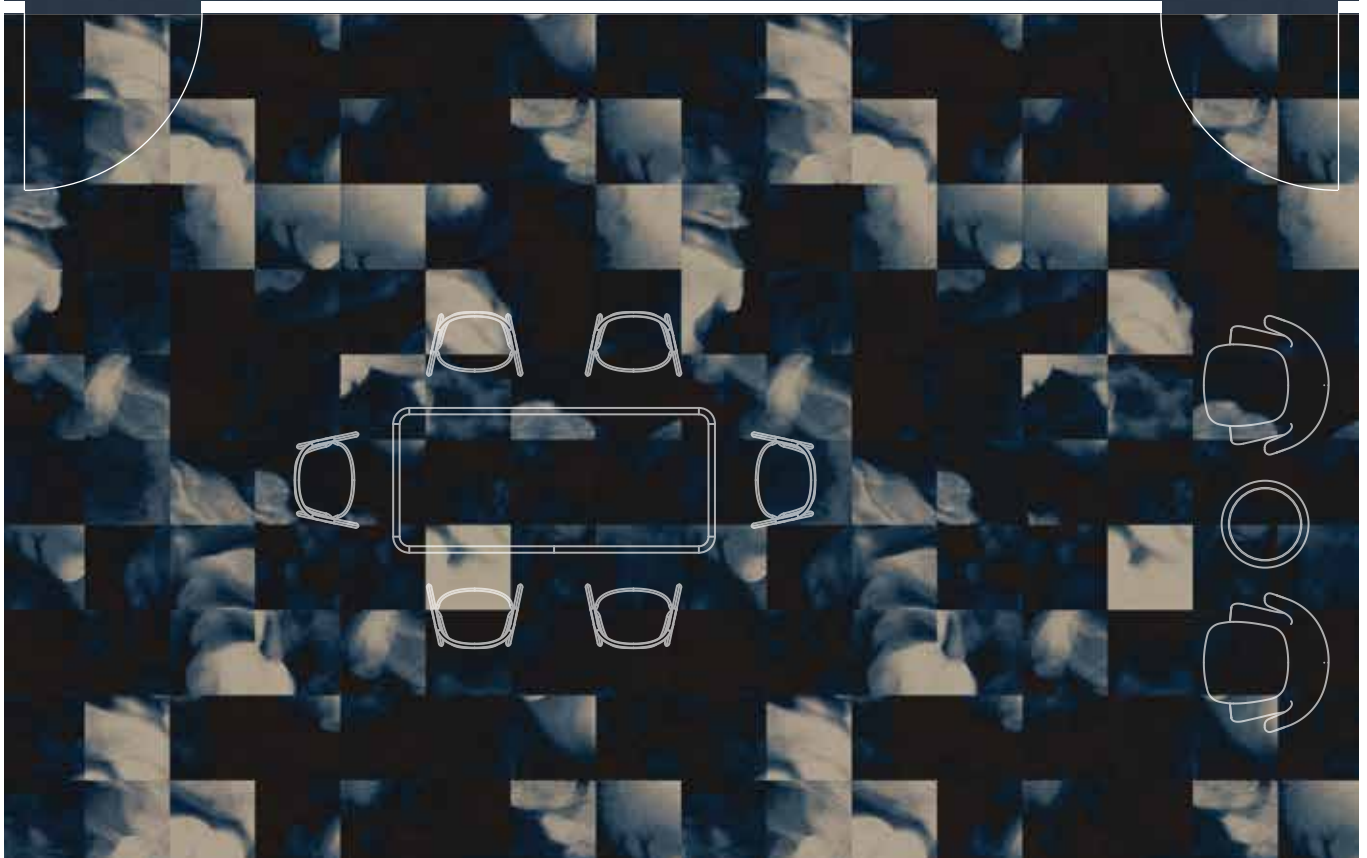
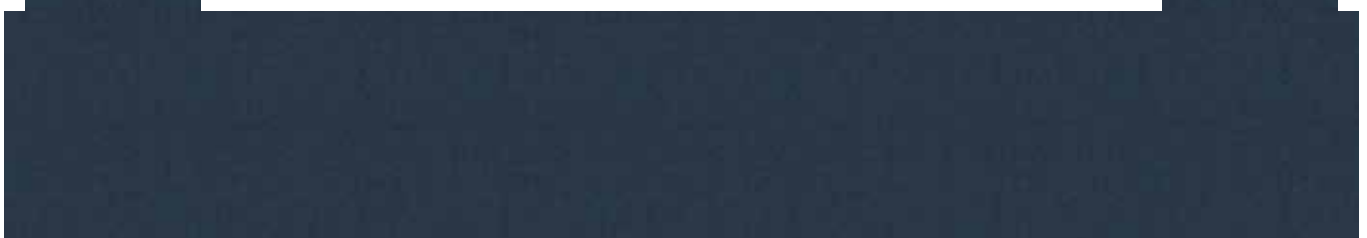
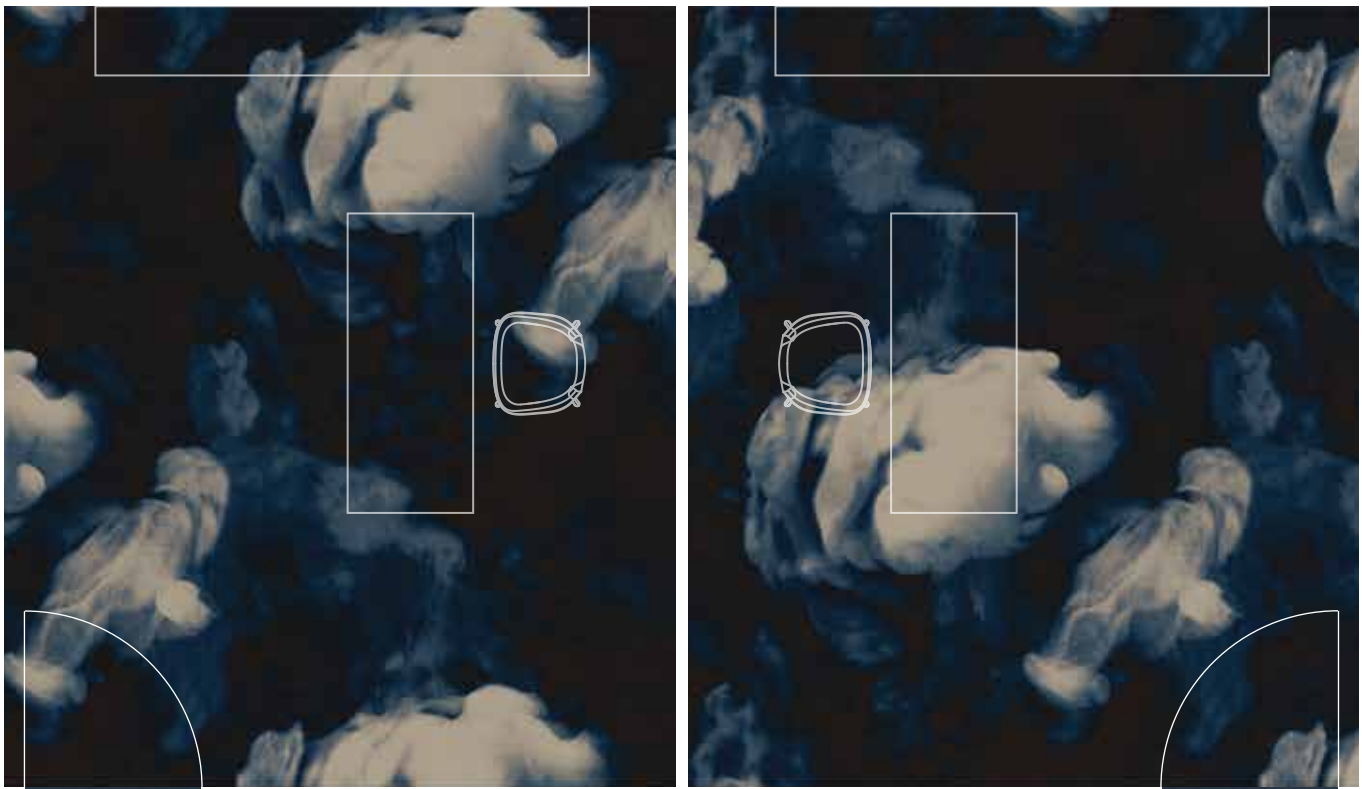


RF52952271 SMOKE
w: 390.1 cm x l: 585.1 cm

K5295



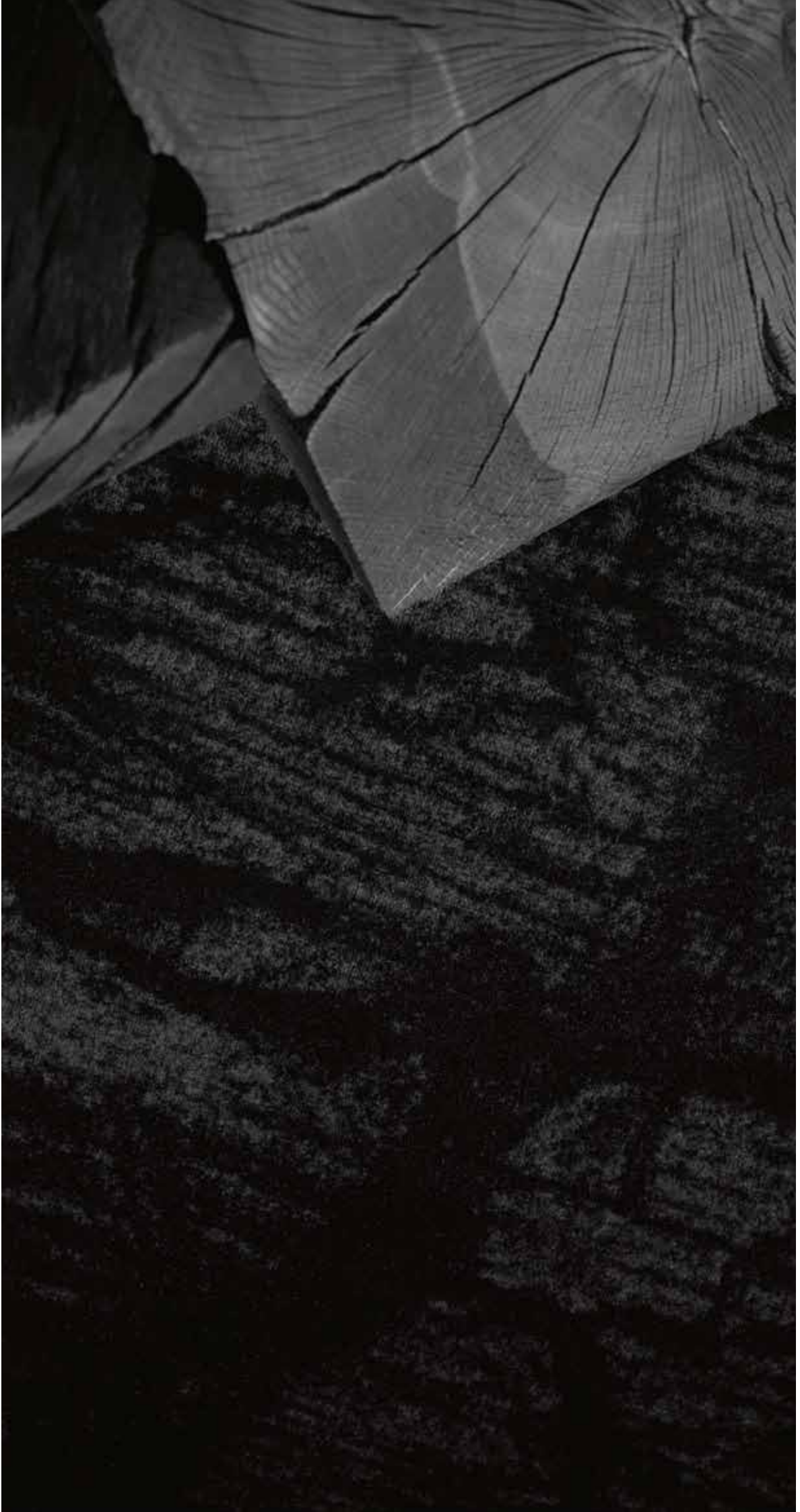
Floorscape inspiration



coal

Years of fossilisation produce the dark mysterious substance that powered the Industrial Revolution.





RF55001037 COAL

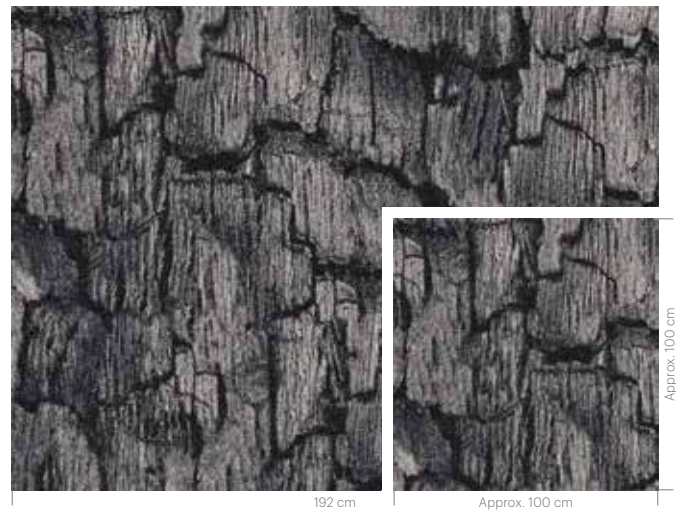
RFM55001043 COAL
Installation example 4 x 3 tiles

K5500



RF55001043 COAL
w: 390.1 cm x l: 390.1 cm

K5500



RFM55001037 COAL
Installation example 4 x 3 tiles

K5500



RF55001037 COAL
w: 390.1 cm x l: 390.1 cm

K5500



RF55001040 IRON / RF55001038 IRON / RFM52752291 IRON /
RF52752291 IRON / RF55001039 IRON

iron

The gradual disintegration of the oxidized metal surface that generates a random hued patination.







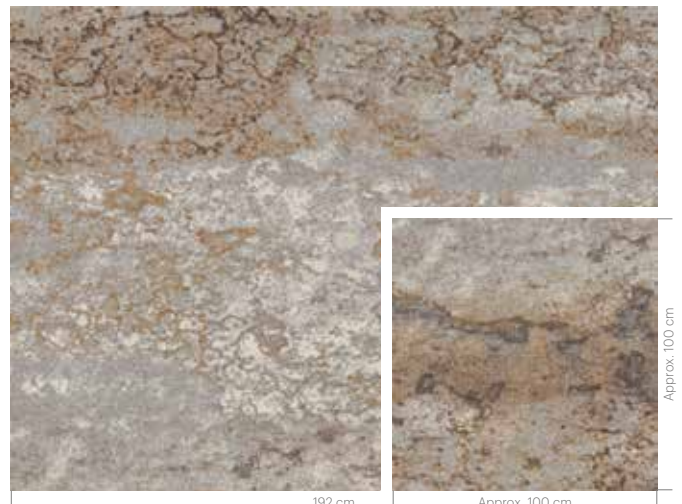
RFM55001038 IRON
Installation example 4 x 3 tiles

K5500



RF55001038 IRON
w: 390.1 cm x l: 390.1 cm

K5500



RFM55001040 IRON
Installation example 4 x 3 tiles

K5500



RF55001040 IRON
w: 390.1 cm x l: 390.1 cm

K5500



RFM55001039 IRON
Installation example 4 x 3 tiles

K5500



RF55001039 IRON
w: 390.1 cm x l: 390.1 cm

K5500



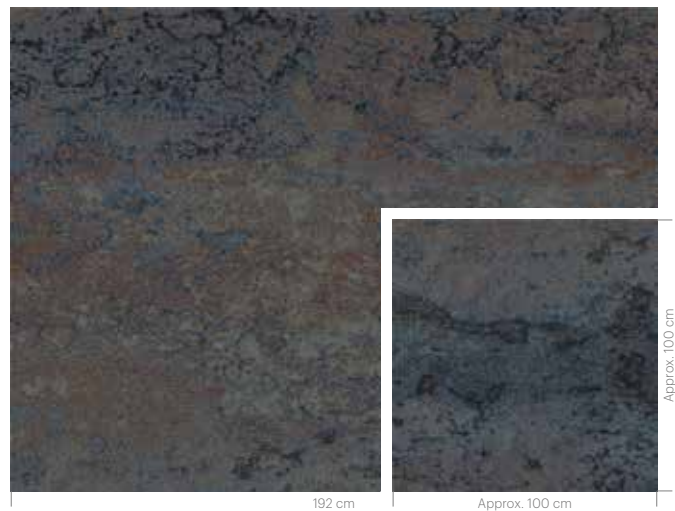
RFM52752291 IRON
Installation example 4 x 3 tiles

K5275



RF52752291 IRON
w: 390.1 cm x l: 390.1 cm

K5275



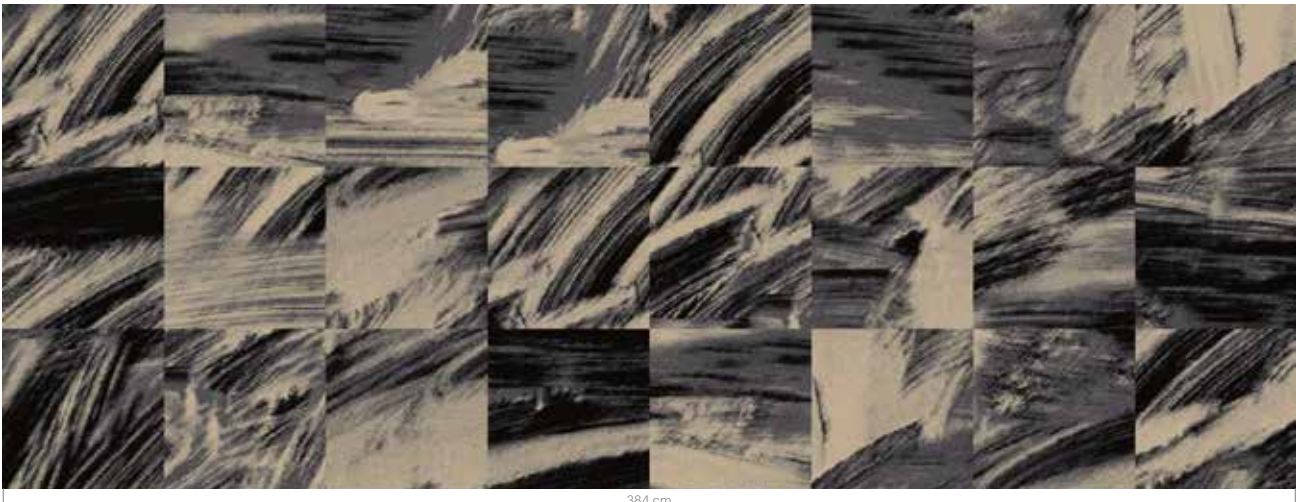
wash

The constant evolution and regeneration of people, places and ideas from a city in flux.



RFM52952273 WASH
Installation example 8 x 3 tiles

K5295



384 cm



RFM52952275 WASH
Installation example 8 x 3 tiles

K5295



384 cm



RF52952273 WASH
w: 390.1 cm x l: 508 cm

K5295



RF52952275 WASH
w: 390.1 cm x l: 508 cm

K5295



blur

The distorted city reflections in transient bits of water like puddles and fresh rainfall.





RFM52752290 BLUR II

RFM55001042 BLUR II
Installation example 4 x 3 tiles

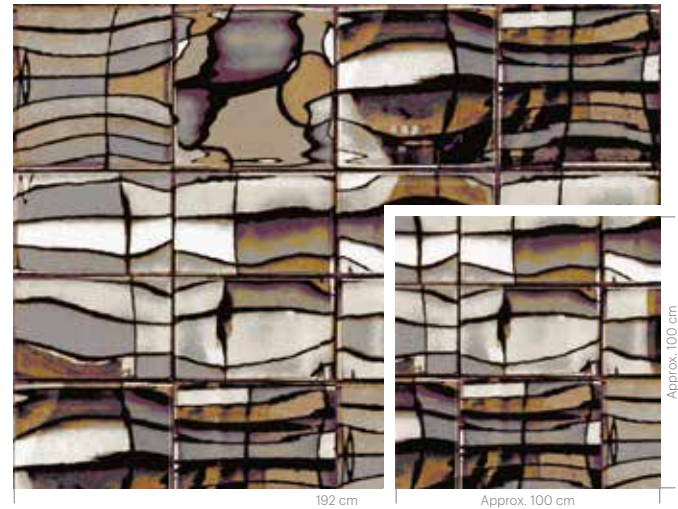
K5500



C1	C2	C3	C4	C5	C6	C7	C8	C9	C10	C11
NONE	GB4	AC13	AC34	AC15	AC51	GB2	AC35	AC28	AC18	GB12
C12	C13	C14								
AC23	GB3	AC14								

RF55001042 BLUR II
w: 390,1 cm x l: 227,1 cm

K5500



C1	C2	C3	C4	C5	C6	C7	C8	C9	C10	C11
NONE	GB4	AC13	AC34	AC15	AC51	GB2	AC35	AC28	AC18	GB12
C12	C13	C14								
AC23	GB3	AC14								

RFM52752290 BLUR II
Installation example 4 x 3 tiles

K5275



C1	C2	C3	C4	C5	C6	C7	C8	C9	C10	C11
NONE	GB1	GB2	GB3	AC25	AC31	GB5	GB12	AC33	AC24	AC38
C12	C13	C14	C15	C16	C17	C18	C19	C20		
AC39	AC36	AC43	AC42	AC47	AC18	AC20	GB11	AC28		

RF52752290 BLUR II
w: 390,1 cm x l: 227,1 cm

K5275



C1	C2	C3	C4	C5	C6	C7	C8	C9	C10	C11
NONE	GB1	GB2	GB3	AC25	AC31	GB5	GB12	AC33	AC24	AC38
C12	C13	C14	C15	C16	C17	C18	C19	C20		
AC39	AC36	AC43	AC42	AC47	AC18	AC20	GB11	AC28		

tide

The marks exposed from the motion, sediment and flow of the historic and tidal River Thames.





RF52952278 TIDE

RFM52952278 TIDE

Installation example 4 x 3 tiles

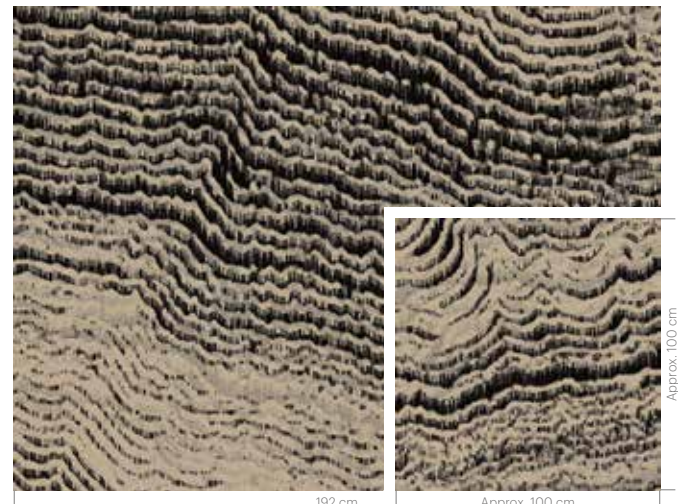
K5295



RF52952278 TIDE

w: 390.1 cm x l: 797.6 cm

K5295



RFM52952279 TIDE

Installation example 4 x 3 tiles

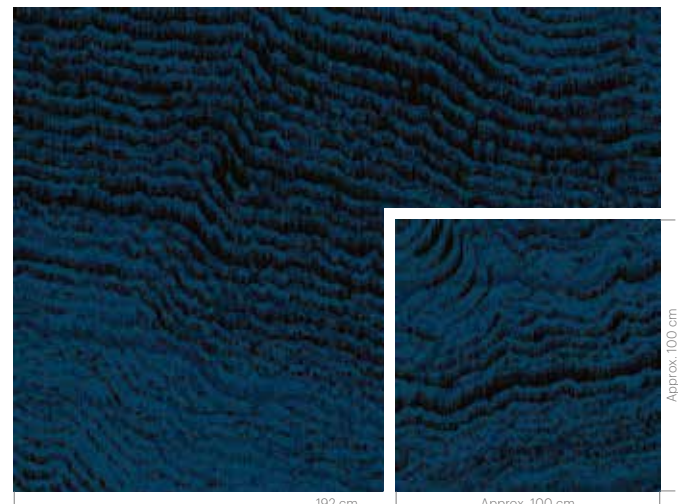
K5295



RF52952279 TIDE

w: 390.1 cm x l: 797.6 cm

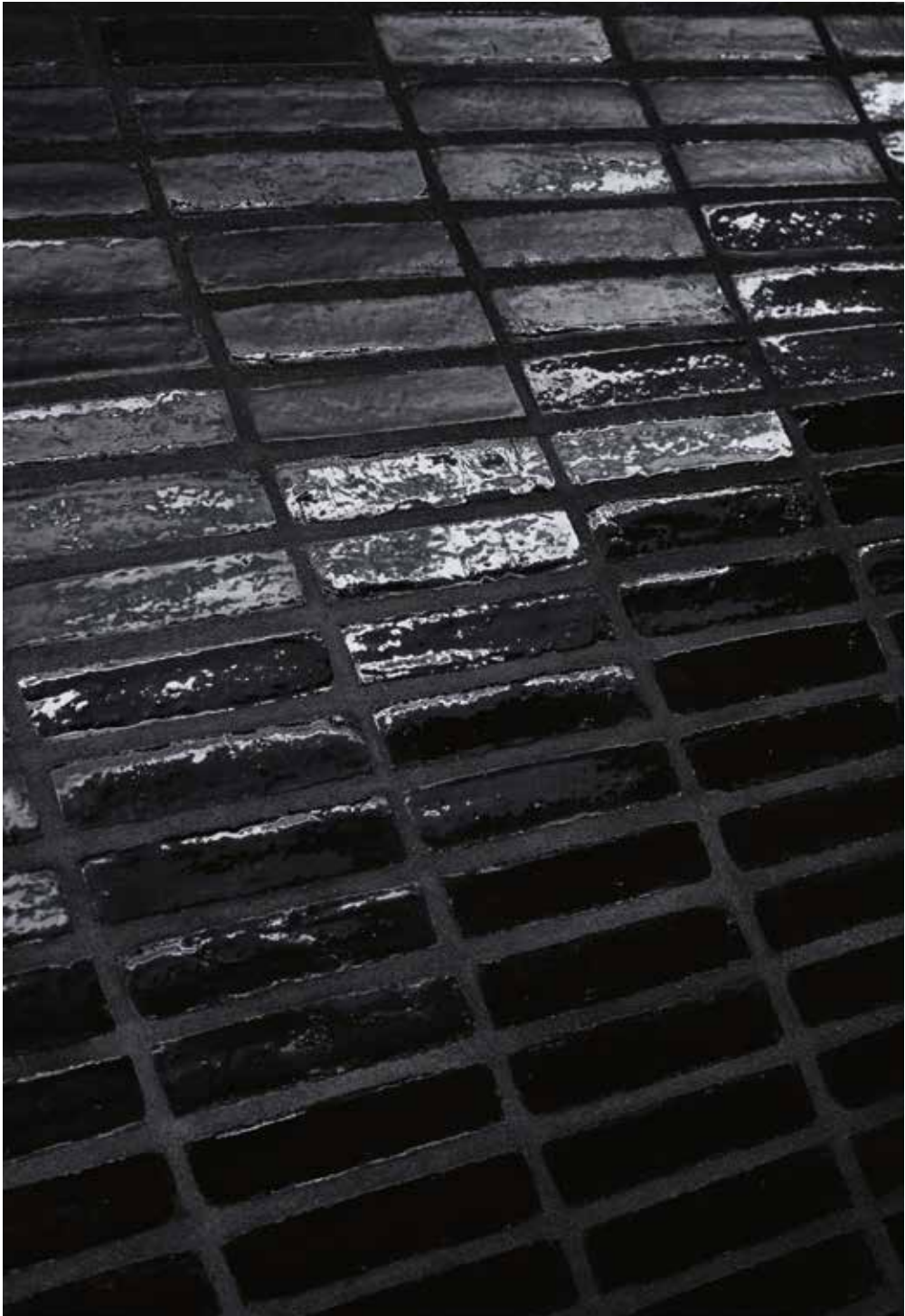
K5295

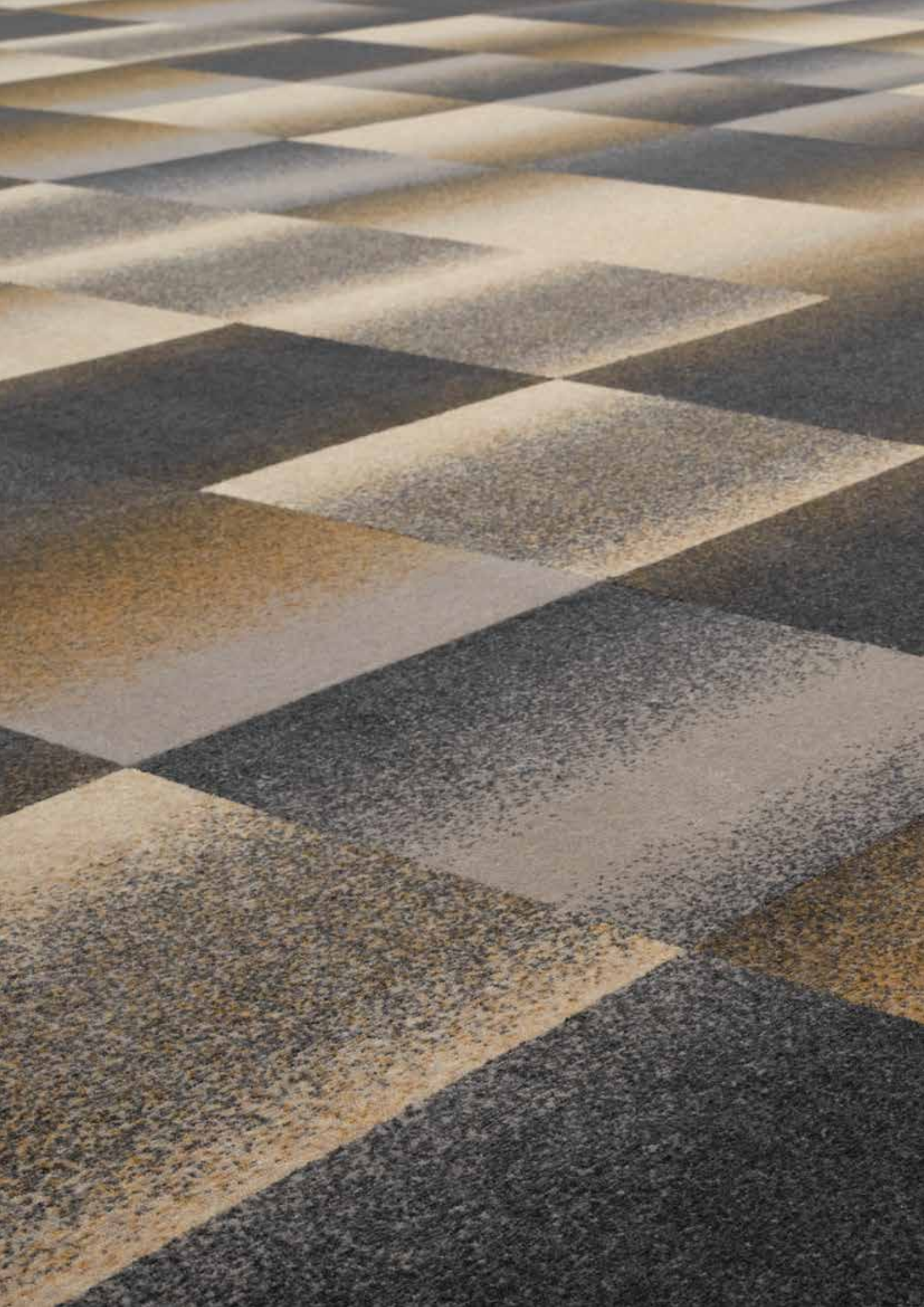


brick

Handmade and glazed bricks are the symbol and defining material of the London cityscape.

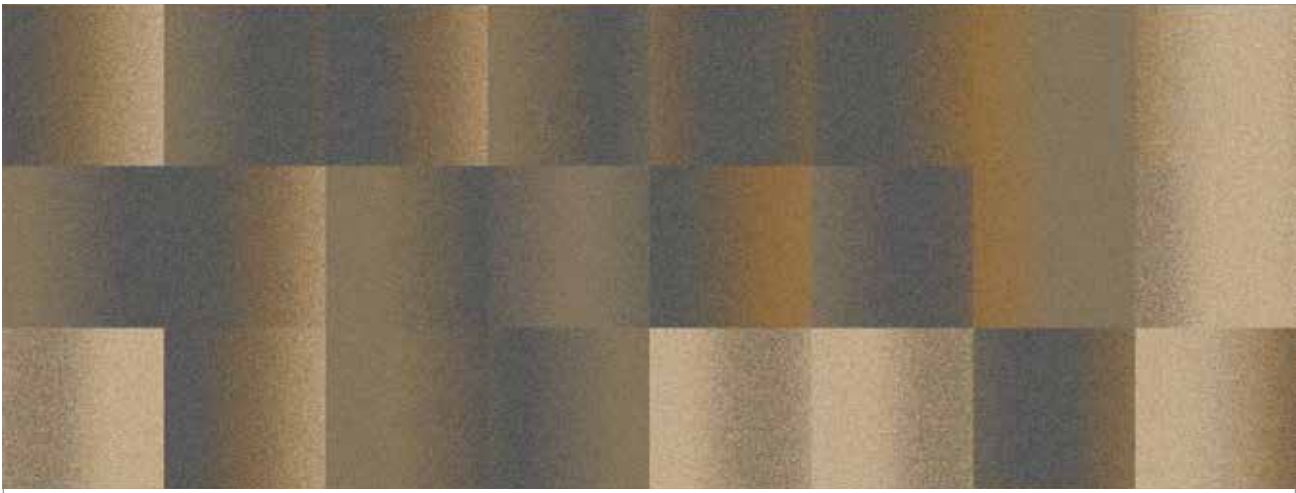




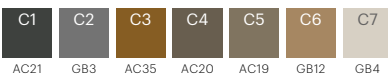


RFM55001041 BRICK II
Installation example 8 x 3 tiles

K5500



384 cm

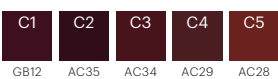


RFM52752292 BRICK II
Installation example 8 x 3 tiles

K5275

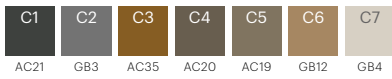


384 cm



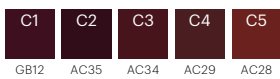
RF55001041 BRICK II
w: 390,1 cm x l: 48,8 cm

K5500



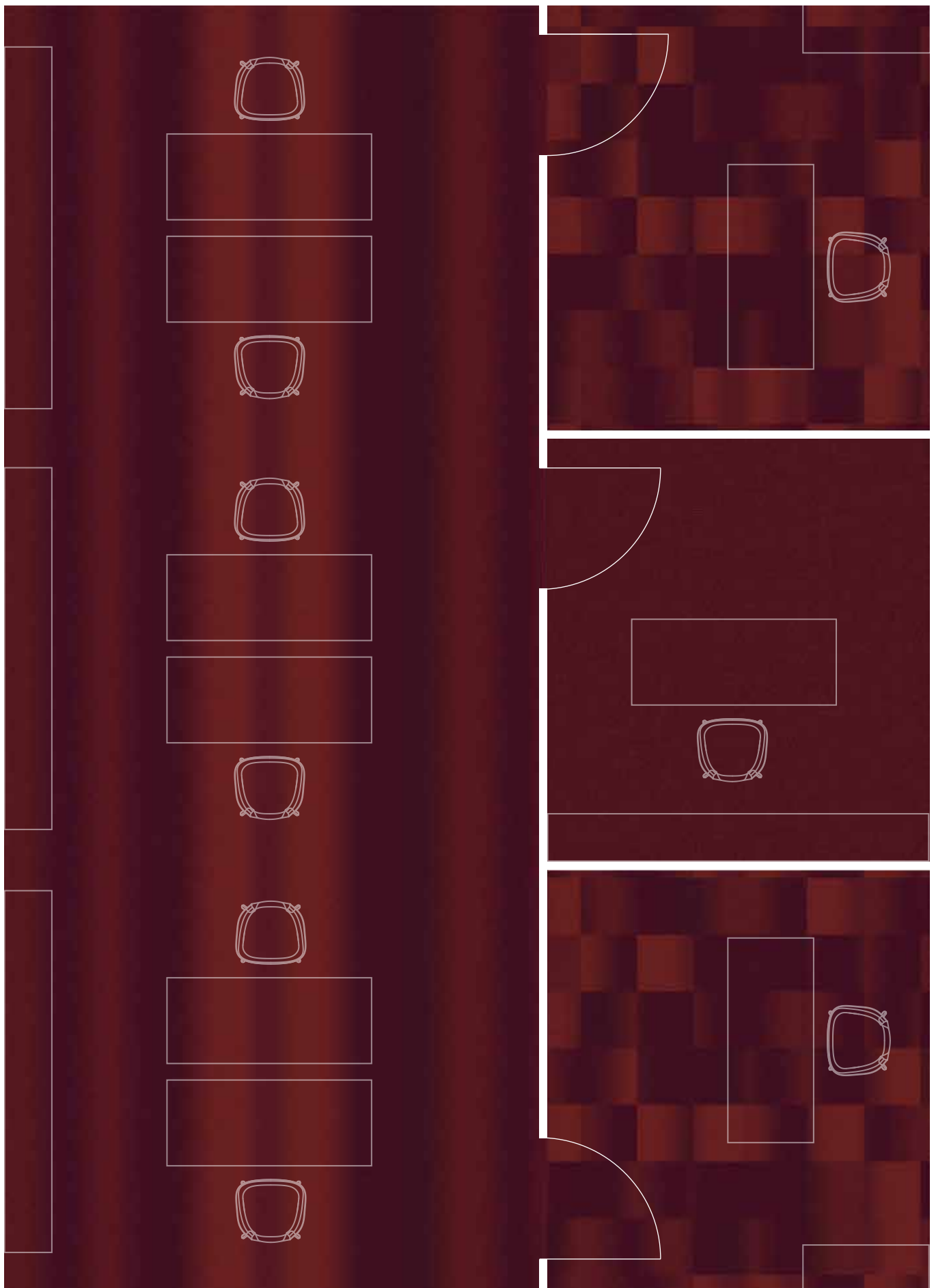
RF52752292 BRICK II
w: 390,1 cm x l: 48,8 cm

K5275





Floorscape inspiration





Collection overview

smoke

PURPLE



RFM & RF52752289
Page 8-9

GREY



RFM & RF52952270
Page 10

BLUE



RFM & RF52952271
Page 10

coal

GREY



RFM & RF55001043
Page 15

BLACK



RFM & RF55001037
Page 15

iron

BEIGE



RFM & RF55001038
Page 20

BLACK



RFM & RF55001040
Page 20

BROWN



RFM & RF55001039
Page 21

BLUE



RFM & RF52752291
Page 21

wash

GREY



RFM & RF52952273
Page 24-25

BLUE



RFM & RF52952275
Page 24-25

blur II

LUSTRE



RFM & RF55001042
Page 29

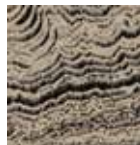
OILY



RFM & RF52752290
Page 29

tide

GREY



RFM & RF52952278
Page 33

BLUE



RFM & RF52952279
Page 33

brick II

YELLOW



RFM & RF55001041
Page 38-39

RUST



RFM & RF52752292
Page 38-39

Standard colour palettes

All designs are developed in one of four standard colour palettes as listed below. Each palette has 12 solid base colours (GB1-12) including a large number of accent colours (AC).

K5500 BASE COLOUR PALETTE

GB1 K40501	GB2 K40502	GB3 K40503	GB4 K40504
GB5 K40505	GB6 K40506	GB7 K40507	GB8 K40508
GB9 K40509	GB10 K40510	GB11 K40511	GB12 K40512

K5500 ACCENT COLOURS for use in areas of max. 50 x 50 cm

AC13	AC14	AC15	AC16	AC17	AC48	AC49	AC50	AC51	AC52
AC18	AC19	AC20	AC21	AC22	AC53	AC54	AC55	AC56	AC57
AC23	AC24	AC25	AC26	AC27	AC58	AC59	AC60	AC61	AC62
AC28	AC29	AC30	AC31	AC32	AC63	AC64	AC65	AC66	AC67
AC33	AC34	AC35	AC36	AC37	AC68	AC69	AC70	AC71	AC72
AC38	AC39	AC40	AC41	AC42	AC73	AC74	AC75	AC76	AC77
AC43	AC44	AC45	AC46	AC47					

K5220 BASE COLOUR PALETTE

GB1 A20041	GB2 A20042	GB3 A20043	GB4 K20044
GB5 K20045	GB6 K20046	GB7 K20047	GB8 K20048
GB9 K20049	GB10 K20050	GB11 K20051	GB12 K20012

K5220 ACCENT COLOURS for use in areas of max. 50 x 50 cm

AC43	AC44	AC45	AC46	AC47	AC63	AC64	AC65	AC66	AC67
AC48	AC49	AC50	AC51	AC52	AC68	AC69	AC70	AC71	AC72
AC53	AC54	AC55	AC56	AC57	AC73	AC74	AC75	AC76	AC77
AC58	AC59	AC60	AC61	AC62					

K5275 BASE COLOUR PALETTE

GB1 K28328	GB2 K28329	GB3 K28378	GB4 K28374
GB5 K28366	GB6 K28364	GB7 K28380	GB8 K28379
GB9 K27886	GB10 K28360	GB11 K28367	GB12 K28368

K5275 ACCENT COLOURS for use in areas of max. 50 x 50 cm

AC13	AC14	AC15	AC16	AC17	AC33	AC34	AC35	AC36	AC37
AC18	AC19	AC20	AC21	AC22	AC38	AC39	AC40	AC41	AC42
AC23	AC24	AC25	AC26	AC27	AC43	AC44	AC45	AC46	AC47
AC28	AC29	AC30	AC31	AC32					

K5295 BASE COLOUR PALETTE

GB1 K28601	GB2 K28602	GB3 K28603	GB4 K20012
GB5 H28605	GB6 K28606	GB7 K28607	GB8 K28608
GB9 K28609	GB10 K28610	GB11 H28611	GB12 H28632

K5295 ACCENT COLOURS for use in areas of max. 50 x 50 cm

AC13	AC14	AC15	AC16	AC17	AC33	AC34	AC35	AC36	AC37
AC18	AC19	AC20	AC21	AC22	AC38	AC39	AC40	AC41	AC42
AC23	AC24	AC25	AC26	AC27	AC43	AC44	AC45	AC46	AC47
AC28	AC29	AC30	AC31	AC32					

Recolour steps

SELECT DESIGN

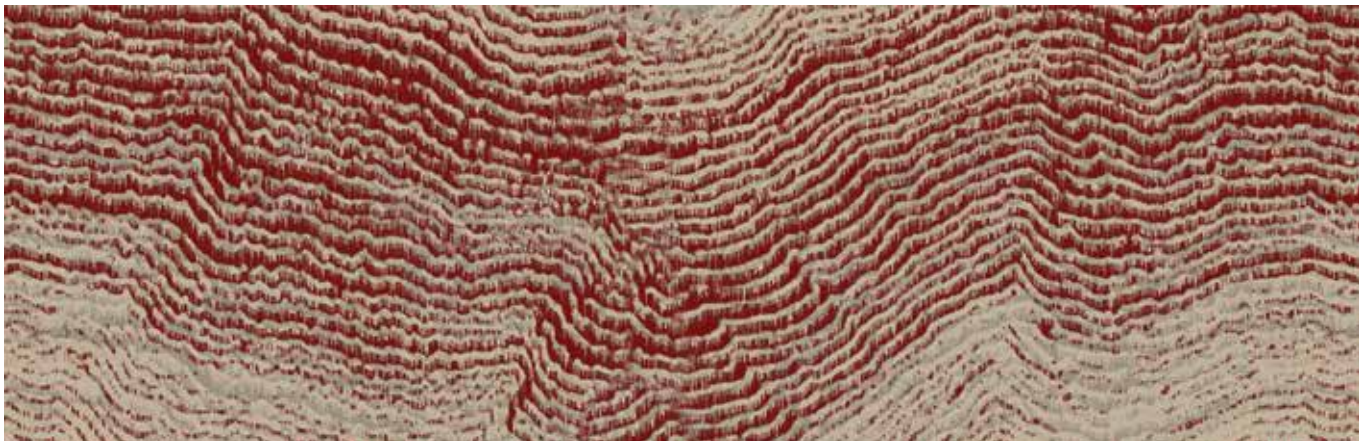
RF52952278



CHANGE COLOUR OF BACKGROUND

Choose between GB1-12 and in areas of max. 50 x 50 cm also choose accent colours

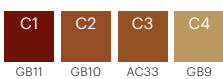
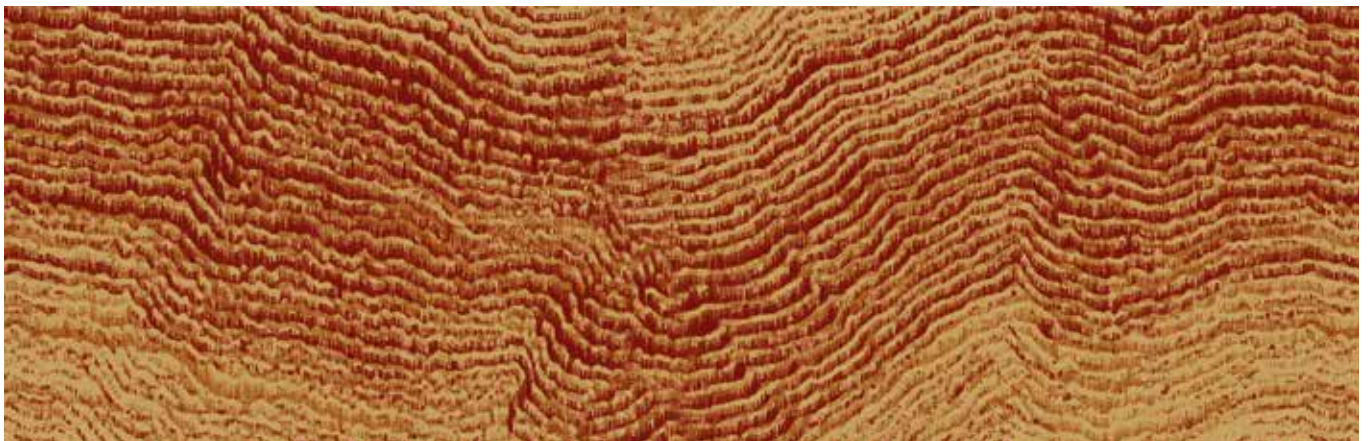
EF16102-100



CHANGE PATTERN COLOUR

Choose between GB1-12 and accent colours from the same colour palette as used for background

EF16102-101







KALIBRERES



Ca 1.2 bar



Ca 2.5 bar



TRYK

KALIBRERES



Ca 2.2 bar





All the details

Technical specifications

The Industrial Landscape collection features seven design themes. Each of them is available as carpet tiles as well as broadloom creating different expressions within the same design theme. Tiles and broadloom can be mixed together or combined with other ege collections to get a truly unique flooring solution for not only one room but also for projects with several spaces.

- 7 designs
- Recolour options (see page 45)
- Tiles and broadloom
- 6 standard qualities available for tiles (see specifications at egecarpets.com)
- 9 standard qualities available for broadloom (see specifications at egecarpets.com)
- Minimum order from 40 m² for tiles
- No minimum order requirements for broadloom
- Undisputed performance standard EN 1307
- Performance classification to fit any need; extra heavy use
- 24-hour sample service
- Dispatch within 2 weeks from receipt of order

The green choice

All carpet tiles from the Industrial Landscape collection have the patented Ecotrust felt backing. This is an innovative production technique turning used water bottles into a soft, yet strong and highly durable PET felt that also holds great acoustic performance. The Ecotrust backing is Cradle to Cradle™ certified signifying that it is one of the most environmentally friendly tile backings on the market.

Combined with the Highline 1100, Loop or Carré face quality made of regenerated and regenerable ECONYL® yarns, the product is a 100% green choice. ECONYL® yarns are produced from mainly used fishing nets that are reborn as strong, hardwearing yarns for textile flooring.





BY APPOINTMENT TO THE ROYAL DANISH COURT

ege carpets a/s

thanks

Tom Dixon · Helene Bangsbo Andersen, Creative
Director Tom Dixon · Micaela Silva, Senior Designer
Tom Dixon · Karen Nybo, Designer ege · Susanne
Lykke, Visual Communication Manager ege · Mikkel
Mortensen, Photographer Yellows · Lene Ronfeldt,
Interior Stylist



ege[®]

THE URGE TO EXPLORE SPACE

egecarpets.com